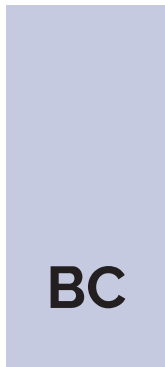




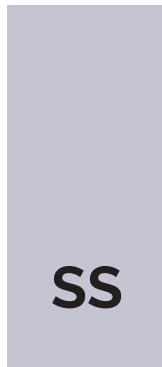
METAL TRIMS



BC



BRIGHT CHROME



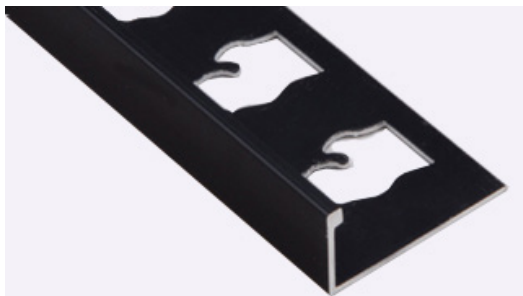
SS



SATIN SILVER



MB



MATTE BLACK



WH



WHITE



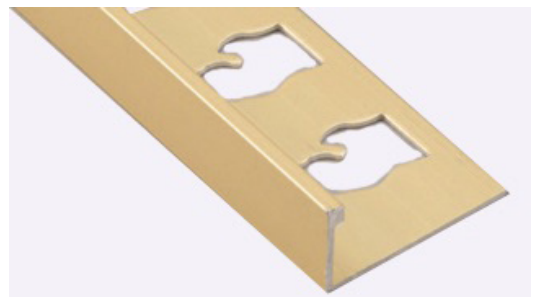
BG



BRIGHT GOLD



SG



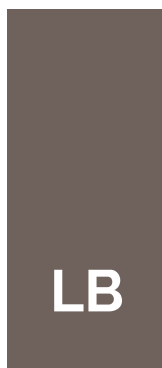
SATIN GOLD



BRN



BRUSHED NICKEL



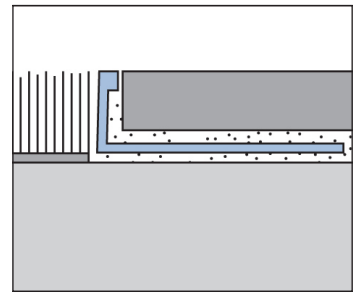
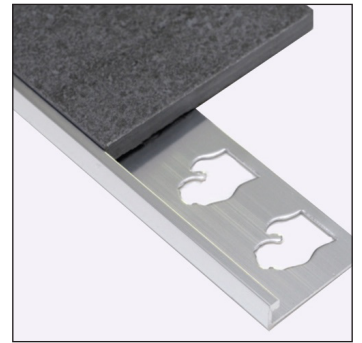
LB



LIGHT BRONZE

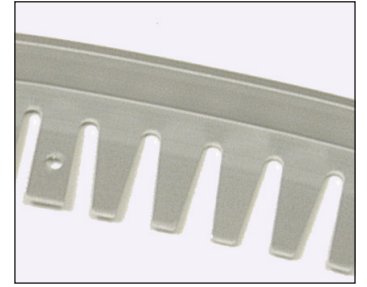
L - CHANNELS

BRIGHT CHROME	1/4"	6mm	QL.LC.BC-1/4
	5/16"	8mm	QL.LC.BC-5/16
	3/8"	10mm	QL.LC.BC-3/8
	1/2"	12.5mm	QL.LC.BC-1/2
	7/16"	11mm	QL.LC.BC-7/16
	5/8"	16mm	QL.LC.BC-5/8
BRIGHT GOLD	5/16	8mm	QL.LC.BG-5/16
	3/8	10mm	QL.LC.BG-3/8
BRUSHED NICKEL	3/8	10mm	QL.LC.BRN-3/8
	1/2	12.5mm	QL.LC.BRN-1/2
LIGHT BRONZE	1/4"	6mm	QL.LC.LB-1/4
	5/16"	8mm	QL.LC.LB-5/16
	3/8"	10mm	QL.LC.LB-3/8
	1/2"	12.5mm	QL.LC.LB-1/2
	5/8"	16mm	QL.LC.LB-5/8
	3/4"	20mm	QL.LC.LB-3/4
MATTE BLACK	5/16"	8mm	QL.LC.MB-5/16
	3/8"	10mm	QL.LC.MB-3/8
	1/2"	12.5mm	QL.LC.MB-1/2
	3/4"	20mm	QL.LC.MB-3/4
SATIN GOLD	3/8"	10mm	QL.LC.SG-3/8
SATIN SILVER	1/4"	6mm	QL.LC.SS-1/4
	5/16"	8mm	QL.LC.SS-5/16
	3/8"	10mm	QL.LC.SS-3/8
	1/2"	12.5mm	QL.LC.SS-1/2
	7/16"	11mm	QL.LC.SS-7/16
	5/8"	16mm	QL.LC.SS-5/8
	3/4"	20mm	QL.LC.SS-3/4
WHITE	5/16"	8mm	QL.LC.WH-5/16
	3/8"	10mm	QL.LC.WH-3/8
	1/2"	12.5mm	QL.LC.WH-1/2



BENDABLE L - CHANNELS

LIGHT BRONZE	3/8"	10mm	QL.BN.LB-3/8
	1/2"	12.5mm	QL.BN.LB-1/2
SATIN SILVER	3/8"	10mm	QL.BN.SS-3/8
	1/2"	12.5mm	QL.BN.SS-1/2



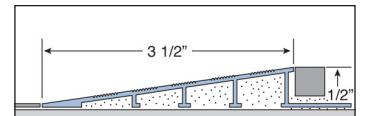
REDUCER

BRIGHT CHROME	5/16"	8mm	QL.RE.BC-5/16
	3/8"	10mm	QL.RE.BC-3/8
	1/2"	12.5mm	QL.RE.BC-1/2
LIGHT BRONZE	1/2"	12.5mm	QL.RE.LB-1/2
SATIN SILVER	5/16"	8mm	QL.RE.SS-5/16
	3/8"	10mm	QL.RE.SS-3/8
	1/2"	12.5mm	QL.RE.SS-1/2



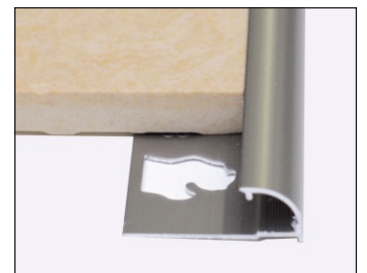
RAMP REDUCER (ADA COMPLIANT)

SATIN SILVER	1/2"	12.5mm	QL.RR.SS-1/2
--------------	------	--------	--------------



ROUND EDGE

BRIGHT CHROME	3/8"	10mm	QL.RO.BC-3/8
	1/2"	12.5mm	QL.RO.BC-1/2
LIGHT BRONZE	3/8"	10mm	QL.RO.LB-3/8
	1/2"	12.5mm	QL.RO.LB-1/2
SATIN SILVER	3/8"	10mm	QL.RO.SS-3/8
	1/2"	12.5mm	QL.RO.SS-1/2



COVE BASE

SATIN SILVER	3/8"	10mm	QL.COVE.SS-3/8
	3/8" IN	10mm	QL.COVE.SS-IN
	3/8" OUT	10mm	QL.COVE.SS-OUT

